

September 2013

CALENDAR AT A GLANCE

MAP TESTING (grades K - 7th) thru 9/27

Friday, 9/20 - Bright Beginnings Play Group for children ages 5 & under, Wellerwood Playground, 12:30 - 1:30 PM (page 3)

Wednesday, 9/25 - School Picture Day

Thursday, 9/26 - Late deadline for all missing birth certificates, immunization records, proofs of residency* (see page 3 for more details)

Friday, 9/27 - **No School** for Students - Professional Development for Staff

Monday, 9/30 - LOOP BEGINS! 7:30 AM - 8:50 AM ~ and ~ 4:01 PM - 5:30 PM

Wednesday, 10/2 - **COUNT DAY**

Please call to excuse all absences & tardies by 9:30 AM & have all healthy children in school all day.

Tuesday, October 8 - Friday 10/25- MEAP Testing for 3rd - 7th graders

Monday, 11/4 - **NO SCHOOL & NO LOOP**

Tuesday, 11/5 - **NO SCHOOL & NO LOOP**

ATTENDANCE POLICY

Please remember to call the school office by 9:30 AM if your child will be absent or tardy. You can call our voice mail system 24 hours a day, 7 days a week, so you can leave a message for us in the middle of the night if your child becomes ill.

Please refer to the revised attendance policy on pages 10—11 in the student policy handbook. This is a district-wide policy that we are required to follow.

Please have healthy students in school and keep sick & contagious children home. This is especially helpful with the MAP & MEAP Tests (see information below). Regular school attendance is important for academic progress. We can do make up tests and class work for students who have to miss school because of illness or emergencies.

UNIFORM POLICY REMINDER

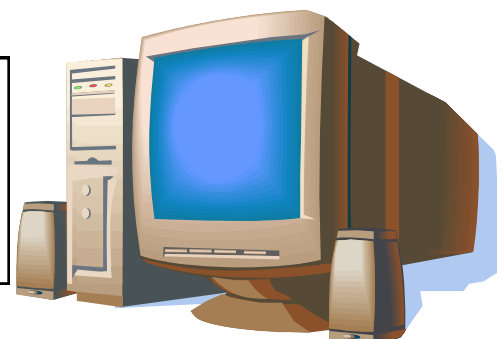
Students must wear collared shirts in: navy blue, light blue, white, black, red, or orange.

Pants / Skirts / Shorts must be: navy blue, black, or khaki/tan.

Beginning Friday 9/20, students have the option to wear blue jeans on Fridays with a collared uniform shirt.



Connect with North Park Schools on facebook or twitter, or e-mail Miss Marissa to get newsletters and updates via e-mail:
robertsm@grps.org



GETTING INTO THE LOOP

We welcome the return of LOOP, beginning on Monday, September 30. LOOP is a free before & after school enrichment program run on-site at North Park Schools by the YMCA. Before school LOOP begins at 7:30 AM and students are dismissed for breakfast (or the playground) at 8:50 AM.

After school LOOP begins at 4:01 PM with students going to the cafeteria for a snack before going to different activities. After school LOOP ends at 5:30 PM.



Students must be signed up for the LOOP Program before they can begin attending. Applications are available in the school office.

If you need to reach Rachel from LOOP, you can contact her at northparkloop@grymca.org or by phone at (616) 307-6156. If your child is in LOOP, please watch their backpack for special field trip information & family night events.

TIPS for FLU season



- **Get your child & yourself vaccinated** against BOTH seasonal and H1N1 (swine flu)
- **Know the signs & symptoms of the flu:** *fever, cough, sore throat, runny or stuffy nose, body aches, headaches, and feeling very tired.*
- **DON'T send children to school if they are sick.** 
- **Teach your children to wash their hands.** *Use soap and water or alcohol-based hand cleaner.*
- **Teach your children NOT to share personal items like drinks, food, unwashed utensils.**
- **Cover your mouth and nose with a tissue when you cough or sneeze.** *If you do not have a tissue, use your upper sleeve NOT your hands.* 

RAIN OR SHINE, AND DROP OFF TIME

Drop off begins at 8:50 AM. Before that time, parents are responsible for their own children. Before school supervision, breakfast, and 1st - 7th grade classroom drop off can begin at 8:50. Students should enter through Door C by the cafeteria.

If you would like to drop off earlier than 8:50, please consider signing up for the LOOP Program which will begin on September 30.

We bring students indoors starting at 8:50 if weather conditions make it unsafe (lightning, hail, freezing, etc.) to be outside.



VISITORS & VOLUNTEERS

All visitors must sign in when they enter the building. Our sign-in book is in the office. Visitors will get a visitor sticker or can wear their volunteer badge. This is for the safety of our students. There are no exceptions to this rule. This is **every visitor, every time**. You can download an application to volunteer from www.northparkschools.org or see Marissa in the office if you need a paper copy.

STUDENT HEALTH

Our students work together in groups and share supplies, so contagious illnesses can spread quickly when sick children come to school. Please refer to **page 54 of the Student Policy Handbook** if they are showing signs of communicable diseases.

If your child will stay home sick, **please let us know their symptoms** when you call. Our school nurse needs this data for her reports.

We welcome donations of facial tissues and hand sanitizer for your child's classroom. Thank you!

WINTER COATS

The temperatures will be dropping soon. If you need help getting a winter coat or gloves for your child(ren), please contact Robin or Marissa as soon as possible.

TRANSPORTATION

If you have any bussing questions, problems, or requests, please e-mail or call Marissa and she will enter new pick up or drop off addresses or work with you to find a solution.

After school plans should be made at home. If your child will be riding the bus home with a friend or getting off on a classmates' stop, they **must** have a note from a parent/guardian **every time** to give to the bus driver.

Please make sure to send a note to school with your child if their after school plans will be different. We have very young children insisting they will get picked up, or that they should take the bus, and sometimes kids get confused about the day of a playdate. Rather than have young children waiting in the wrong spot and panicking her

Bus drivers are responsible for taking students to their designated stops and need to be able to report to their supervisors for each child who they transport, especially if they are not on the bussing list.

MAP & MEAP TESTING

All students kindergarten through 7th Grade are currently taking the MAP Tests. These computerized tests are given in the fall, winter, and spring. They're an exciting tool we use to track student growth throughout the academic year. We use the immediate feedback to adjust lessons and instruction to make sure each student is being appropriately challenged or receiving additional support services if needed.



MEAP testing is just around the corner, we'd like to remind you that a good night's sleep and a healthy breakfast can make a difference when students sit down to take these tests.

P.T.A. COMMUNITY INFORMATION

At GR Montessori @ North Park, we have a very strong, active community supporting student growth. Many forms, newsletters, and important school event details can be found on the PTA website www.northparkschools.org Bookmark the site and return back often!

We welcome new & returning families to join us for our first meeting (and a light dinner) on **Monday, September 16 at 6 PM in the library.**

SEVERE WEATHER

We will be practicing school-wide severe weather drills very soon. We talk about & practice what to do in case of a fire, tornado, and a code red lock down.

We have a weather radio that alerts us to actual severe weather.

A Tornado Watch is issued to alert people to the possibility of a tornado developing in your area. At this point, a tornado has not been seen but the conditions are very favorable for tornados to occur at any moment.

A Tornado Warning is issued when a tornado has actually been sighted or has been picked up on radar in your area. This means that you need to take shelter immediately in a safe sturdy structure.

In the event of an actual Tornado Warning, all staff and students take cover on the ground level and phones are not answered. Please know that the children's safety is our top priority and every available staff member is making sure the children are safe and aware of what is going on during drills & actual cases of severe weather.

You may want to take the opportunity to make sure smoke detectors at home have fresh batteries and practice what to do in case of an emergency at home.



Bright Beginnings is a program offered by the Kent Intermediate School District (KISD) for families with children ages 5 and under. They offer free playgroups, information, and support for families with young children.

To find out more or get on their mailing list, please contact Laura Fasel. You can reach her by phone at (616)291-6501, or via e-mail at LauraFasel@kentisd.org

North Park Montessori Staff E-mail Directory

Our first priority is educating our students. Teachers will generally respond to e-mails received within 24 hours during the school week. Please do not e-mail last minute after school directions or requests to our teachers. We recommend adding your child's teacher to your e-mail address book or phone contacts. :-)

CHILDREN'S HOUSE TEACHERS

Botting, Sybil bottings@grps.org

Freewind, Kathy freewindk@grps.org

E1 TEACHERS (1st / 2nd / 3rd grades)

Start, Jody startj@grps.org

Mikrut, Alexandra mikruta@grps.org

Davidson, Nia davidsonn@grps.org

Hendricks, Sue hendrickss@grps.org

Zophy, Martha "Heidi" zophym@grps.org



E2 TEACHERS (4th / 5th / 6th grades)

Lee, Pam leepa@grps.org *** - please note this e-mail address is not last name, first initial like the rest

Skipp, Theresa skippt@grps.org

Staats, Chelsea ckstaats@hotmail.com *** please note this e-mail address is not @grps.org

staatsc@grps.org – e-mail account should be working soon!

7th GRADE TEACHER

Hall, Jennifer hallj@grps.org

ASD TEACHERS

Bradford, Kim bradfordk@grps.org

DeGroot, Mandi degrootm@grps.org

VanZoeren, Anita vanzoerena@grps.org

Attar, Sharon attars@grps.org ASD Speech Teacher

Office, Support Staff, Other Teachers

Sorge, Robin sorger@grps.org Principal

Roberts, Marissa robertsm@grps.org Secretary

Allen, Catherine allenc@grps.org Vocal Music Teacher

Fineis, Carrie fineisc@grps.org Psychologist

Geahan, Robin geahanr@grps.org Computer Lab Technician

Guidry, Mary guidrym@grps.org Resource Teacher

Heartwell, Dawn heartwelld@grps.org Social Worker

Kieren, Kellie kierenk@grps.org Athletic Director & PE Teacher

McGoffin, Metta mcgoffinm@grps.org Librarian / Literacy Aid

Sherman, Mary shermanm@grps.org Speech Teacher

Weber, Nate webern@grps.org Middle School Band/Orchestra Teacher

Zapata, Lucia zapatal@grps.org Art Teacher

Other Important Contact Info:

PARENT / TEACHER ASSOCIATION

www.northparkschools.org

pta@northparkschools.org

Facebook: facebook.com/northparkschools

Twitter: <https://twitter.com/nparkschoolsgr>

LOOP BEFORE & AFTER SCHOOL CARE

Rachel, Site Coordinator

northparkloop@grymca.org

(616) 307-6156